

AUGUST 22, 2019

## SCHOOL TRANSFORMATION PROGRAM (SAFFRON SCHOOLS)

TRANSFORMING SANITATION AND EDUCATION FACILITIES IN MUNICIPAL SCHOOLS

*The analysis was done by **Prof. Naman Desai**,  
IIM-Ahmedabad  
[namand@iim.ac.in](mailto:namand@iim.ac.in); +91-7567 135320*

*This analysis was reviewed by*

**Deloitte.**

  
(Dr. Naman Desai)



**Naman Desai**  
(C.A., M.Acc., Ph.D.)  
Finance and Accounting Area

**Indian Institute of Management, Ahmedabad**  
Vastrapur, Ahmedabad 380015, India  
Phone: +91-79-6632 4386 (O) • Fax: +91-79-2630 6896, 6632 6896  
E-mail: [namand@iima.ac.in](mailto:namand@iima.ac.in) • Mobile: +91 75671 35320  
Website: <http://www.iima.ac.in>

# Impact Analysis for Schools Re-Developed

This **Impact Analysis** is done for 50 schools adopted by various patrons.

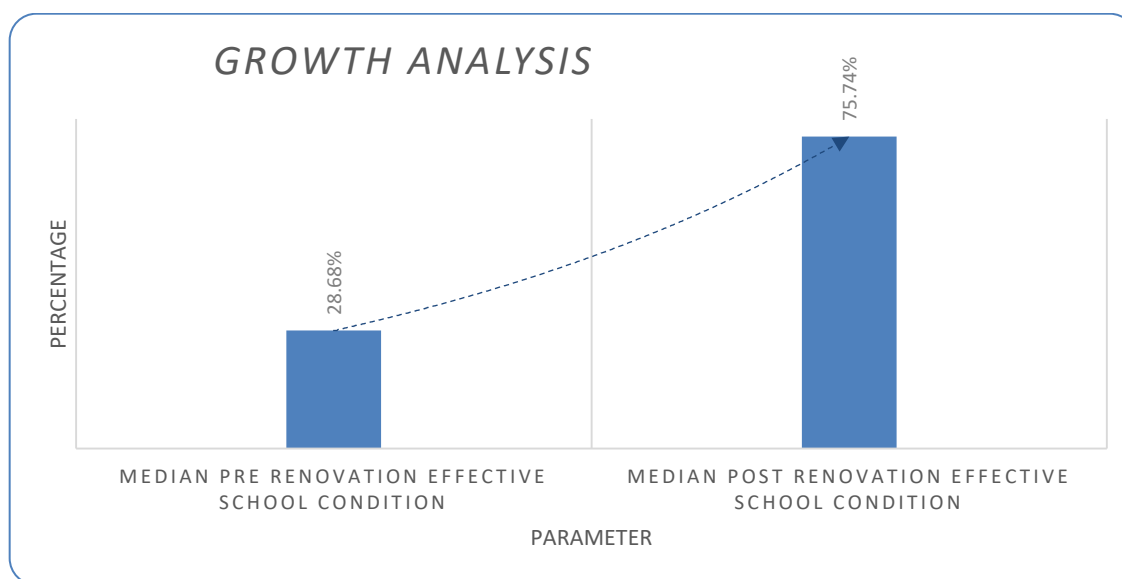
Before the execution of the project in these schools, a pre-survey was conducted wherein a team from IIM-A inspected all the infrastructural facilities, their level of usage, their impact on students, and the attendance records of the students. After the execution and completion of the project, a post-survey was conducted in the same schools which helped us measure the impact of infrastructure redevelopment on students' attendance and their comfort level in schools. The project created an example as how the lethargic and pessimistic attitude of often-absent children turned into an optimistic and positive attitude. Both students' happiness and attendance increased manifold.

The report is divided in two parts. 1) Wash Impact 2) Digital Class Impact

## (I) OVERALL GROWTH ANALYSIS (WASH)

---

Pre-survey and post-survey analyses were done to note the change in usability of the basic amenities in each school before and after redevelopment activity. Below is the graph depicting the changes we have witnessed:



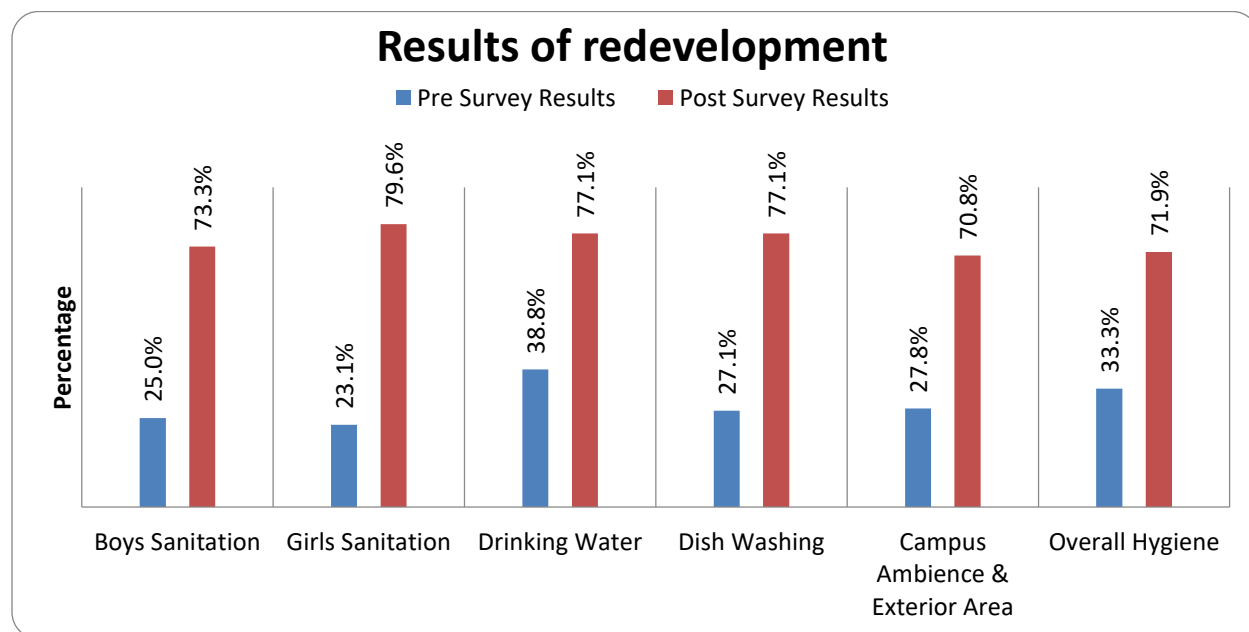
The overall infrastructure standards have improved **by 47.06%**.

---

## OUTCOME OF ASSESSMENT

The assessment includes following factors:

Sr. No.	FACTORS	Importance of Parameters selected
1	Boys Sanitation	It is vital to have a separate and well-maintained boy's sanitation with sufficient urinals and lavatories, proper disposal of water and a clean washbasin.
2	Girls Sanitation	Girls need privacy while using sanitation facilities, especially the ones who have reached puberty. Lack of privacy in the sanitation facilities can lead to a significant drop in attendance by 20% to 30% of school time.
3	Drinking Water Area	Safe drinking water results in decrease of diseases such as diarrhea, intestinal worms which lead to malnutrition and stunted growth.
4	Dishwashing Area	Improved wash practices reduce the risk of hygiene related diseases
5	Campus Ambience	Using appropriate colors in the environment results in improved attention and positive attitude to learning. It also decreases vandalism. Physically, appropriate use of color in the classroom can reduce eyestrain too
6	Overall Hygiene	Regular maintenance helps in keeping premises clean, safe and reliable, which helps improve the overall hygiene.



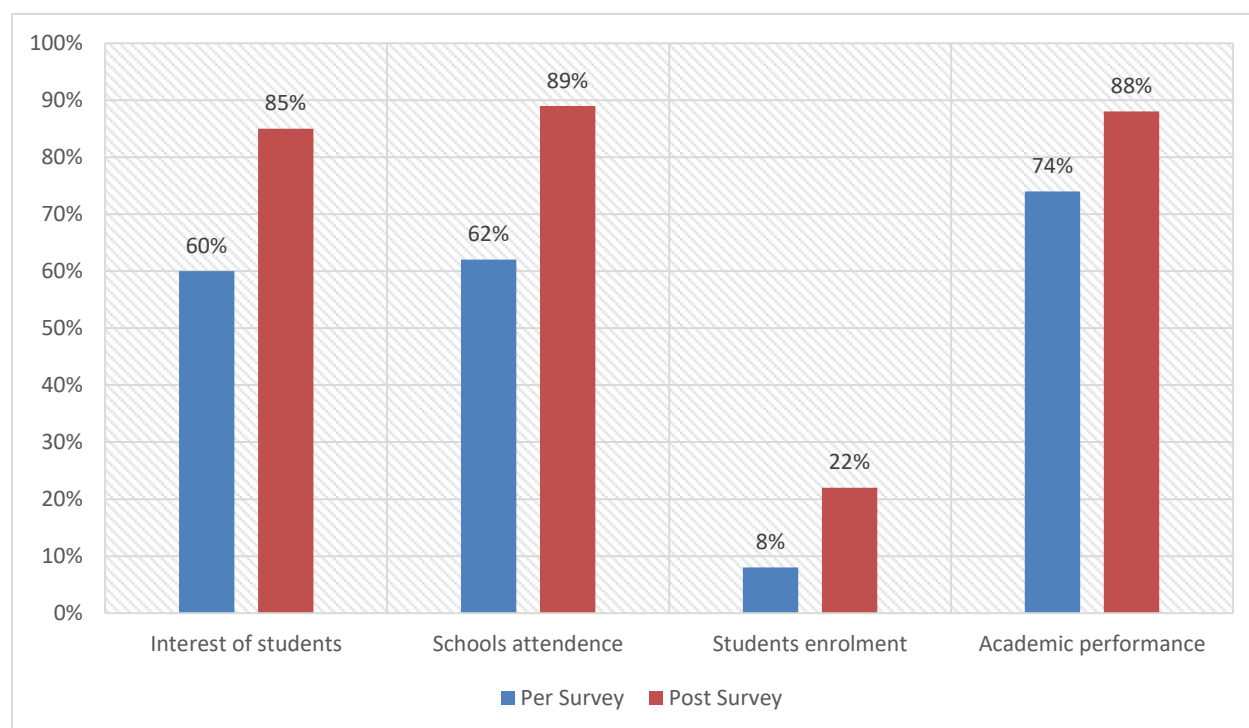
Improvement of **at least 35%** in each factor of the overall assessment done

## (II-A) IMPACT WITH DIGITAL CLASSROOM :

With the support of technology, the smart classrooms have become the places where teachers and students can practice rich and immersive teaching and learning experiences. The study was interested in exploring the relationship between smart learning environments and students' learning skills that are critical in the 21st century. The classroom environment is not only a place to house books, desks, and materials, but also a place where teaching and learning activities becomes easy and effective.

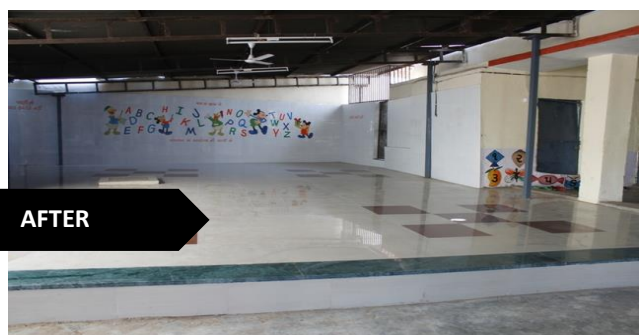
Overall impact assessment of Smart Class is as follows:

<b>Sr. No.</b>	<b>FACTORS</b>	<b>Importance of Parameters selected</b>
1	Interest of Students	General interest of students in coming to school.
2	School attendance	Students attending classes and coming to school regularly was studied.
3	Students Enrollment	The yearly employment of no of students shows how much students are interested in coming to school.
4	Academic performance	Usage of digital class impacts in increase of students' academic results.



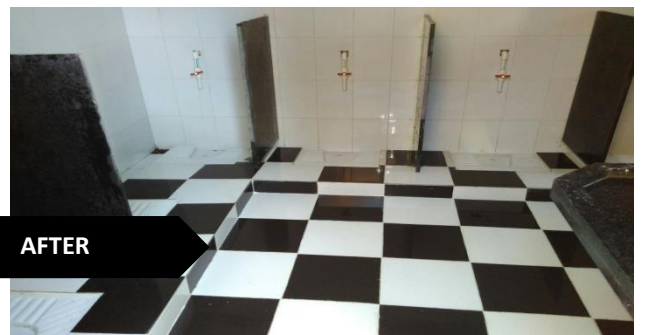
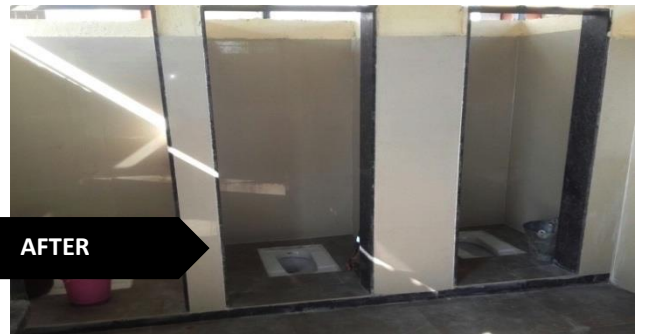
- For improved sustainability we advise to provide chrome books and a Google certified trainer for 1 year.

## IMPACT OF EVOLUTION - WASH





## IMPACT OF EVOLUTION



## Smart Classroom

